

BASE4

BASE4
3858 GLADES ROAD, #31
BOCA RATON, FLORIDA 33434
1.720.12BASE4 www.base-4.com

SEAL



GARRY VERMAAS, PhD, PE
2016.08.05
9011 EDGEWATER BEND
PARKLAND, FLORIDA, 33076



ISSUE:

Issued for Permit
08.05.2016

PROJECT: 16-018

Hampton Inn & Suites

New Stanton, PA 15672

OWNER:

Stanton Hospitality LLC

52 Blueberry Lane,
Grove City, PA 16127

| No. | Issue Date | Project Status |
|-----|------------|----------------|
| | | |
| | | |
| | | |
| | | |
| | | |
| | | |
| | | |
| | | |
| | | |

DATE 2016.08.05

DRAWN BY SJ

CHECKED BY GWV

SCALE AS NOTED

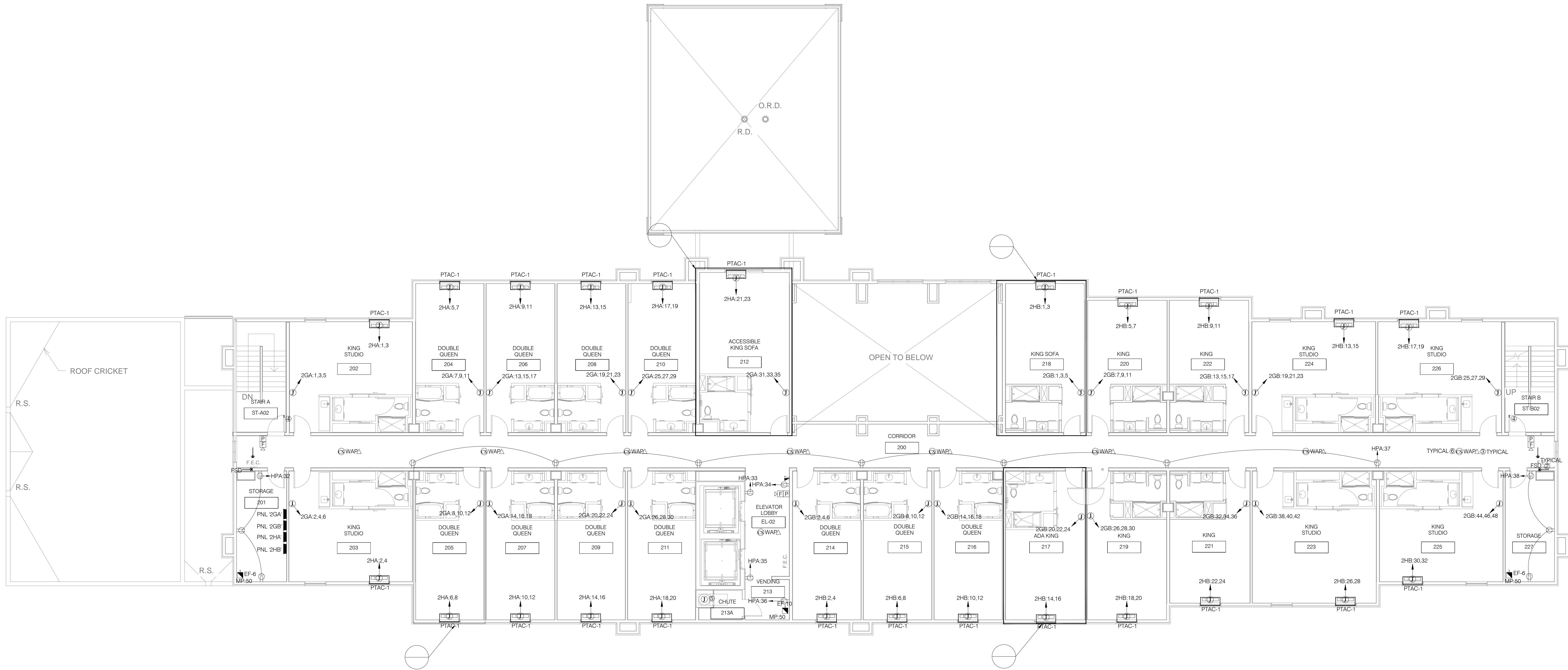
PROJECT NO. B4-67-1603

SHEET NAME

SECOND FLOOR
POWER PLAN

SHEET NO.

E203



KEY NOTES

- ① HOUSE PHONE ONLY W/ AUTOMATIC DIAL TO FRONT DESK.
- ② FIRE/SMOKE DAMPER CONNECT TO FIRE ALARM SYSTEM. SEE MECHANICAL DWG FOR LOCATION AND REQUIREMENT. PROVIDE ELECTRICAL CONNECTION TO SMOKE/FIRE DAMPER FROM OKT HPA-48. TYPICAL FOR ALL FLOOR.
- ③ CONTRACTOR SHALL ENSURE W-FI IS PROVIDED THROUGHOUT PUBLIC AREA.
- ④ MAGNETIC DOOR-HOLD TIED TO THE BUILDING FIRE ALARM CONTROL PANEL. PROVIDE ELECTRICAL CONNECTION TO MAGNETIC DOOR-HOLD SEE OKT HPA-52. TYPICAL FOR ALL FLOOR.
- ⑤ J-BOX FOR LAUNDRY CHUTE DOOR INTERLOCK TO TIE TO CIRCUIT LP-25, TYPICAL FOR EACH FLOOR.
- ⑥ CONTRACTOR SHALL USE (MODEL NO BRK SC9120B) COMBINATION OF SMOKE AND CO DETECTORS. DETECTOR INSTALLED MINIMUM 3'-0" FROM HVAC SUPPLY AIR DIFFUSERS.

01

SECOND FLOOR POWER PLAN

SCALE: 1/8" = 1'-0"